



Luen Thai
Fishing Venture Ltd.



COMPANY PROFILE

Luen Thai Fishing Venture Ltd.

联泰渔业投资有限公司简介

www.ltfv.com



LTFV is a leading seafood company engaged in fishing, base operations, processing, packaging and distribution of fresh tuna and seafood products.

Our Vision is to be recognized by our customers as the #1 Global Supply Chain Service Provider of Quality Fresh Tuna.

联泰渔业投资有限公司 是一家一流的渔业公司，公司致力于对金枪鱼及其它海产进行捕捞、基地运作、加工、包装以及运送。

我们的愿景是成为客户公认的世界第一的优质新鲜金枪鱼供应链服务提供商。



Every year, we supply over 11,000 tons of fresh tuna and other seafood products to customers in Japan, the United States, Europe and China.

We provide quality products to major auction markets, wholesalers, food service, distributors, as well as clubs, retailers, restaurant chains and specialty outlet stores.

Our products range from fresh and frozen whole fish, processed products of various cuts, and valued added packaging.

每一年，我们都会向我们在日本、美国、欧洲和中国的客户输送超过11,000吨新鲜金枪鱼和其它海产品。

我们向各主要的拍卖市场、批发商、餐饮服务商、分销商，以及俱乐部、零售商、连锁餐厅和专卖店提供优质的海鲜产品。

我们的产品包括新鲜和冷冻的全鱼、各类不同尺寸的鱼块产品，以及增值包装产品。

Business Model 商业模式



Supply Chain Integration

LTFV is an integrated fishing company with the ability to supply quality seafood products all year round.

We are a one-stop seafood supply chain services provider.

We control every link of the seafood supply chain which allows us to assure our customers of the highest levels of freshness and quality.

供应链整合

联泰渔业是一家综合性的渔业公司，全年为客户提供优质的海鲜产品。

我们是一家一站式的海产供应链服务提供商。

通过悉心管控海产供应链的每个环节，我们能够确保客户得到最为新鲜和优质的产品。



FLEET

LTFV maintains a fleet of over 70 wholly owned longline fishing vessels in the Western Pacific. Each of these vessels is equipped with the Super Spool system. The longline fishing method used by these boats is the most environmentally proven method of fishing, and greatly reduces non-targeted by-catch.

船队

联泰渔业在西太平洋地区拥有一支超过70艘自有延绳钓渔船的船队，每一艘渔船上均装备有大滚筒系统。船队采用的延绳钓捕鱼法是一种最为环保的捕鱼法，可以极大的减少捕鱼过程中对非目标鱼类的误捕和误伤。

FISHING BASES AND PROCESSING PLANTS

LTFV has four fishing bases / processing plants strategically located in Palau, Pohnpei, Majuro, and Davao. We also have a processing plant in Honolulu. All of the LTFV plants are compliant with global standards of food handling.

LTFV bases also serve as the maintenance and supplies depots for fishing vessels operating in Western Pacific. These bases provide fuel, baits, materials and crew supplies to the vessels.

渔业基地和加工工厂

联泰渔业拥有4个渔业基地/加工工厂，它们战略性地分布在帕劳、波纳佩、马朱罗以及达沃。我们在美国檀香山也设有加工工厂。所有联泰渔业的加工工厂均达到了食品加工的国际标准。

联泰渔业的基地同时还是渔船的维修和供给中心，为在西太平洋地区作业的渔船提供服务，供给的项目包括燃料、饵料、渔具以及船员轮换。

LOGISTICS AND AIR FREIGHT SERVICES

The catch from LTFV's fishing bases are brought to market by Asia Pacific Airlines, a wholly owned company of LTFV. APA operates three (3) 727 cargo planes out of Guam.

物流及空运服务

联泰渔业的渔获是通过联泰渔业的全资子公司亚太航空公司来运往各地市场的。亚太航空公司在关岛拥有3架运输机。

SALES AND MARKETING

LTFV's Sales and Marketing offices in Tokyo, Honolulu, New Jersey, Los Angeles, Seattle and Hongkong handles the distribution of our products to the end customers in Japan, the United States, Europe and China.

市场营销

联泰渔业位于东京、檀香山、新泽西、洛杉矶、西雅图以及香港的销售中心负责将我们的产品运送至日本、美国、欧洲和中国的终端客户。

WORLD-CLASS INFORMATION TECHNOLOGY

LTFV's fishing vessels are equipped with our exclusive Vessel Monitoring System. The barcodes on our products allow customers to know the exact origin of the fish – the date and place where it was caught and the name of the vessel.

世界级的信息技术

我们的每艘渔船均配有独特的渔船监控系统，另外，公司还对鱼产品使用条形码系统，使得客户能够清楚了解每条金枪鱼的原产地，捕获时间以及捕获渔船的编号。

ENVIRONMENT AND SUSTAINABILITY

LTFV is committed to using the most environmentally friendly fishing methods available to minimize non-targeted by-catch. By constantly improving measures within the company and fostering relationships in the community, LTFV strives to attain the goals of sustainability and conservation.

环境保护和渔业的可持续发展

联泰渔业致力于使用最环保的捕鱼作业法以减少对非目标鱼类的误捕与误伤。通过不断提高公司内部运作，联泰渔业力求达到可持续发展的目标。

QUALITY WESTERN PACIFIC TUNA SUPPLY TO THE WORLD



About LTFV

LTFV is a wholly owned subsidiary of Luen Thai International Group Ltd., a Hong Kong based company.

Founded in 1993 by Dr. Tan Siu Lin in Pohnpei, Micronesia, it is now operating fishing bases and processing plants all over the Asia Pacific Region, owning 70 long line fishing vessels, providing resources to retail, end-to-end supply chain for tuna and other seafood products.

Through its alliance with Asia Pacific Airlines, LTFV provides fresh and frozen tuna products to major markets around the world-- US, Japan, Europe, China and other Asian countries.

LUEN THAI FISHING VENTURE LTD.
Address: 5/F Nanyang Plaza, 57 Hung To Road,
Kwun Tong, Kowloon, HongKong
Tel: (852) 2193 3000
Fax: (852) 2193 3915
Email: info@lftv.com

联泰渔业投资有限公司简介

联泰渔业投资有限公司是联泰国际集团的全资子公司，联泰国际集团总部位于香港。

自陈守仁博士1993年在密克罗尼西亚的波纳佩州创立联泰渔业公司至今，公司经营的渔业基地和加工厂已经遍及整个亚太地区。公司现拥有一个70艘渔船的船队，以其海洋到店铺，端到端的供应链模式供应金枪鱼及其他海鲜产品。

通过与亚太航空公司的通力合作，联泰渔业向全球各主要市场，如美国，日本和欧洲提供新鲜金枪鱼及相关加工产品。

联泰渔业投资有限公司
地址：香港九龙观塘鸿图道57号南洋广场5字楼
电话：(852) 2193 3000
传真：(852) 2193 3915
Email: info@lftv.com

www.lftv.com

Fresh Tuna Products

Quality Western Pacific Tuna Supply to the World



Freshness • Quality • Nutritious • Timely Delivery



Fresh Premium Tuna Loins



Fresh G/G Tuna



Fresh CO Super Loin



Fresh Blue Marlin Loin



Fresh Tuna Bellies



Luen Thai Fishing Venture, Ltd.

5/F Nanyang Plaza, 57 Hung To Road, Kwun Tong, Kowloon, Hong Kong

Tel.: (852) 2193-3000

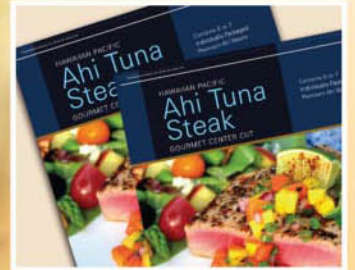
Fax: (852) 2193-3915

Email: info@ltfv.com

Frozen Treated Seafood Products

Quality Western Pacific Tuna Supply to the World

Freshness • Quality • Nutritious • Timely Delivery



Saku



Saku Chutoro



Saku Slices



Loin Block



Steak



Medallions



Poke



Ground Meat



Tataki Saku



Other Products



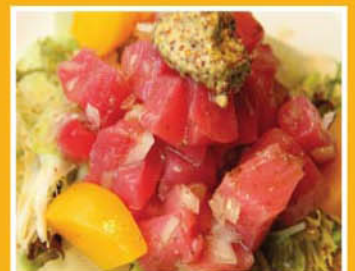
Swordfish Steak



Blue Marlin Loin



Mahi Mahi Fillet



Luen Thai Fishing Venture, Ltd.

5/F Nanyang Plaza, 57 Hung To Road, Kwun Tong, Kowloon, Hong Kong

Tel.: (852) 2193-3000

Fax: (852) 2193-3915

Email: info@ltfv.com

www.ltfv.com

Frozen Untreated Seafood Products

Quality Western Pacific Tuna Supply to the World

Freshness • Quality • Nutritious • Timely Delivery



Tuna Katsu



Tuna Tempura



Tuna Karaage



Tuna Bind Meat



Tuna Jerky



Half cut Tuna Jaws



Oil Fish Saku

Frozen Seafood Products



Marlin Steak
Skinless and/or skin on, boneless
Size: 60- 340 grams



Blue Shark Steak
Skinless and/or skin on, boneless
Size: 1-3, 3-5, 5-7, 7-9 oz



Yellowfin Tuna Steak
Skinless, boneless, trimmed
Size: 1-3, 3-5, 5-7, 7-9, 9-11 Oz



Yellowfin Tuna Loin
Skinless, boneless, bloodline removed
Size: 1-3, 3-5, 5-12, 12 lb up



Swordfish Steak
Skinless and/or skin on, boneless, trimmed
Size: 1-3, 3-5, 5-7, 7-9, 9-11 Oz



Swordfish Loin
Skinless and/or Skin on, boneless, bloodline trimmed
Size: 5-10, 10-20 lb

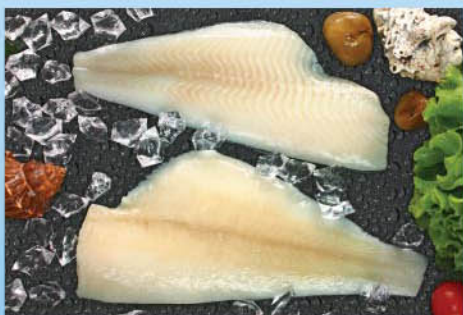
Frozen Seafood Products



Yellowfin Sole



Alaska Pollock



Rock Sole Skinless Fillets



Flathead Sole Fillets



Pacific Cod Fillets



Red Fish Center Cut Fillets



Atka Mackerel Splitted Fillets



Salmon Fillet/Portion

Superfrozen Seafood Products



Premium Tuna Saku



Standard Tuna Saku



Albacore Loin
Skinless, boneless, trimmed



Tuna Block



Blue Marlin Loin